

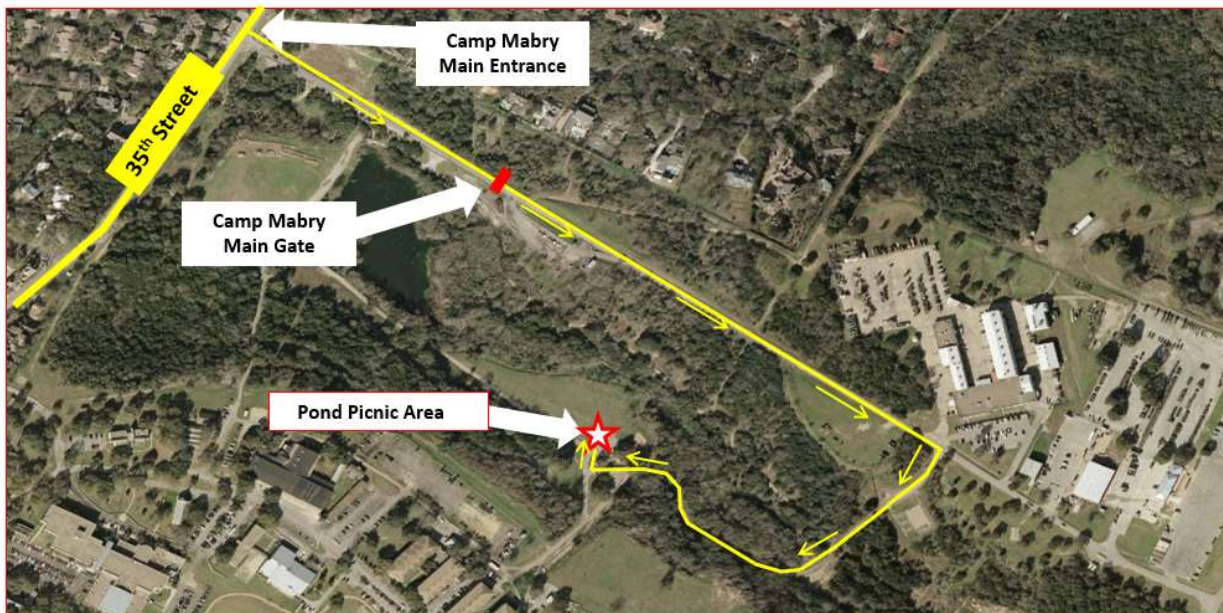
## Camp Mabry

2200 W 35th St, Austin, TX 78703

Take TX-1 Loop to W 35th St in. Take the 35th St west. Entrance will be on your right

### Directions to Pond Picnic Area:

- Enter Camp Mabry through main gate and continue to first right.
- Turn right on to Park Road.
- Follow Park Road until you see Pavilion on your right. That is the Picnic Area.
- Turn right into Picnic Area.



\* Government ID is required for Entrance to Camp Mabry

\*All campers (youth and adults) must submit BSA medical forms A and B.

[http://www.scouting.org/filestore/HealthSafety/pdf/680-001\\_AB.pdf](http://www.scouting.org/filestore/HealthSafety/pdf/680-001_AB.pdf)

\*All Overnight Adults must take a youth protection course and submit a completion form.

<http://www.scouting.org/Training/YouthProtection.aspx>

\*No open-toed shoes are allowed at Boy Scout camping facilities.

\*Scouts should not use electronic devices while camping.

### Friday February 22

5:00pm - Arrive, check in, set camp

10:00pm - lights out

### Saturday, February 23

7:00am - Breakfast (with your Den)

9:00am - hike to museum

9:15am – 11:15am museum tour

11:15am – 11:30am hike to camp

11:30am – 12:30pm lunch (with your Den)

12:30-pm – 2:00 pm - Den advancement time

2:00 – 2:30 hike to community garden

3:00– 4:30 service project

4:30– 5:00 hike to camp

5:00pm – 6:00pm - Rotational activities  
(need parent volunteers)

- Kickball
- Nature hike
- Color scavenger hunt

6:00pm - dinner preparations

7:00pm - dinner

8:30pm - campfire

10:00pm - lights out

### Sunday, February 24

7:00am - breakfast (with your Den)

8:00am - clean camp area

10:00am - checkout

Camping Checklist Bring the following items with you.

**PERSONAL GEAR**

- Scout Book
- Closed-toed shoes
- Scout uniform (wear it on arrival)
- Class-B uniform (Pack165 or any scouting T-shirt)
- Pants, shirt, underwear, 2 pair socks for each day
- Jacket
- Pajamas or short pants for sleeping
- Hat
- Stocking cap for warmth at night
- Rain Gear (coat and pants)
- Sleeping Bag
- Sleeping Pad
- Pillow
- Flashlight (extra batteries)
- Refillable Water Bottle
- Bug Spray
- Washcloth, small towel
- Toothbrush and paste
- Tent

**OPTIONAL**

- Laundry Bag
- Walking Stick
- Backpack
- Sunscreen
- First Aid Kit
- Watch
- Lantern (Extra Batteries)
- Cot
- Chair
- Cart for hauling gear
- Fishing Pole (there is a pond in the camp)